

4V: Primarna građa stabla i korijena

PREPARATI:

- 1) Primarna građa stabla monokotila (kukuruz, *Zea mays*)
- 2) Primarna građa stabla dikotila (američka lulica, *Aristolochia sipho*)
- 3) Primarna građa korijena monokotila (perunika, *Iris germanica*)

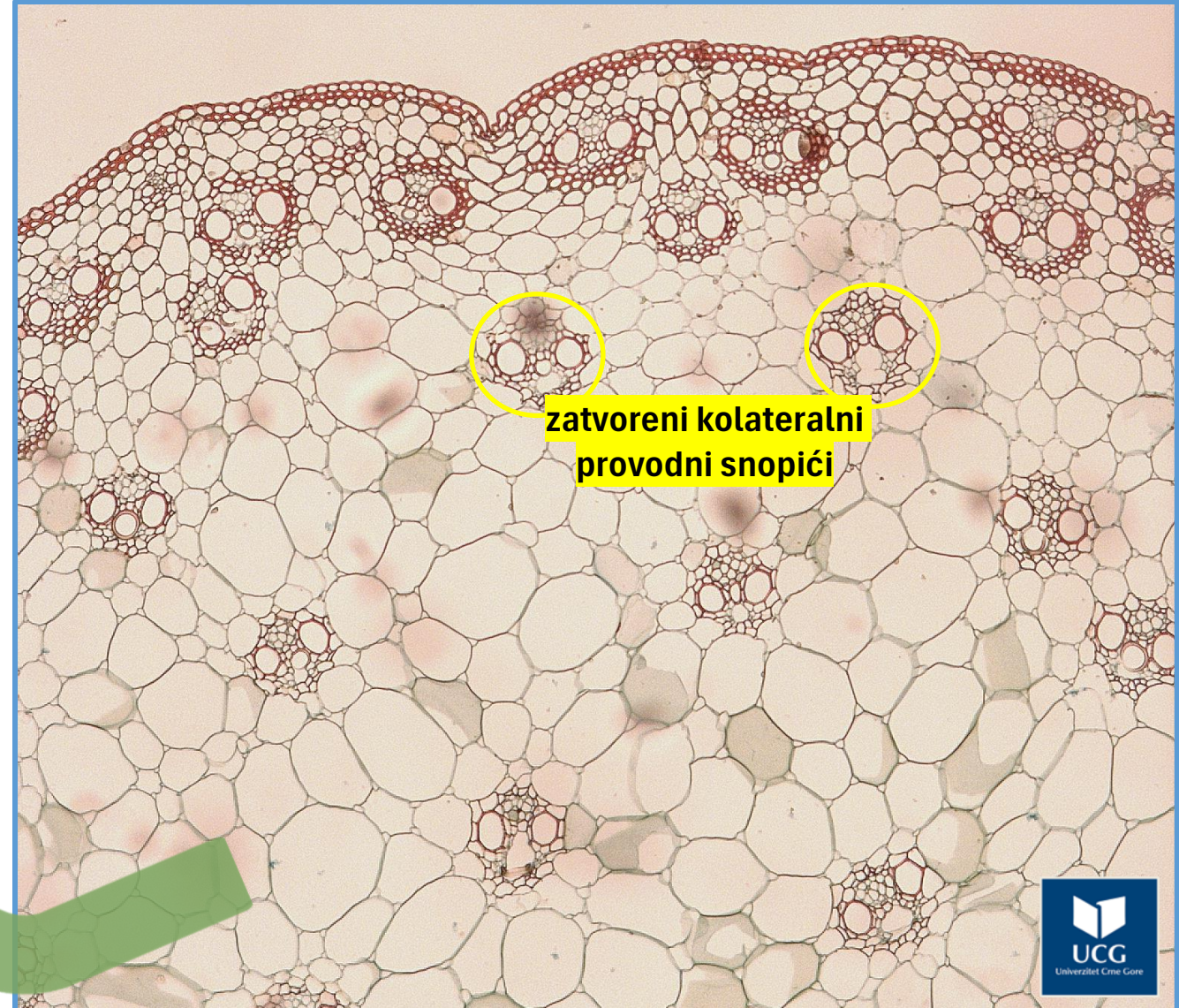
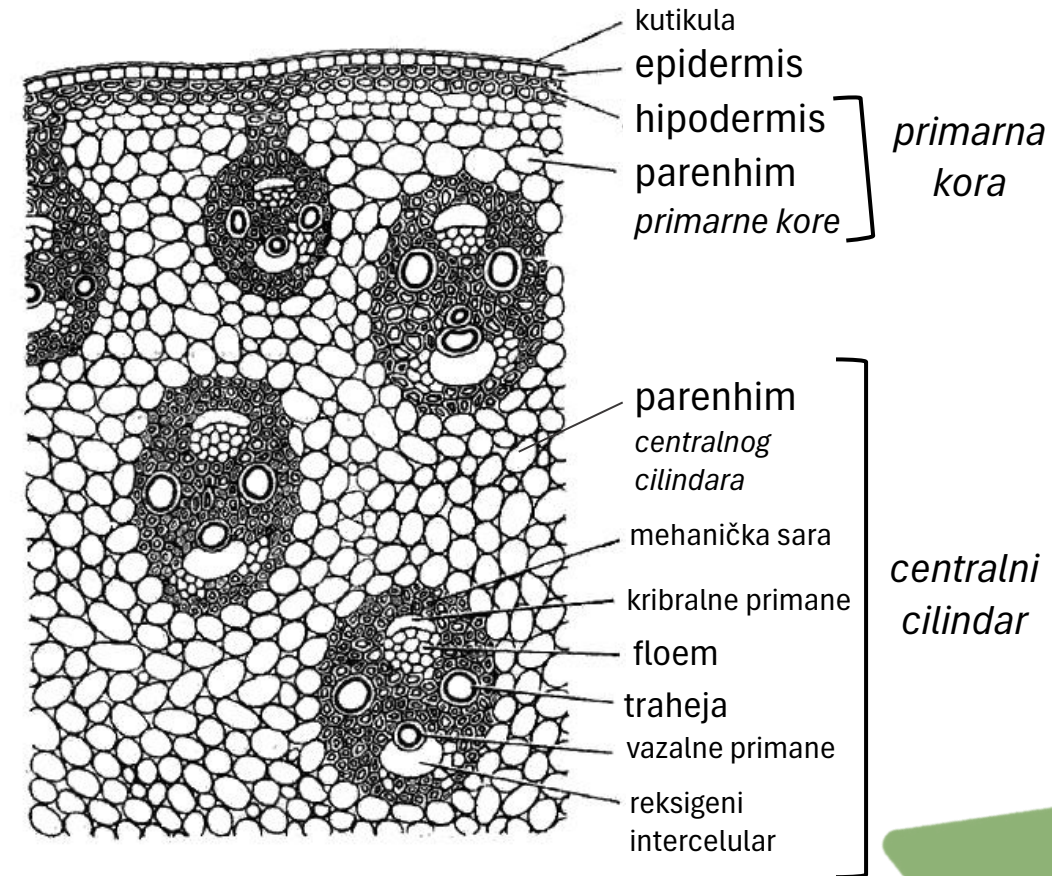
Mijat Božović

BOTANIKA

materijal za laboratorijske vježbe

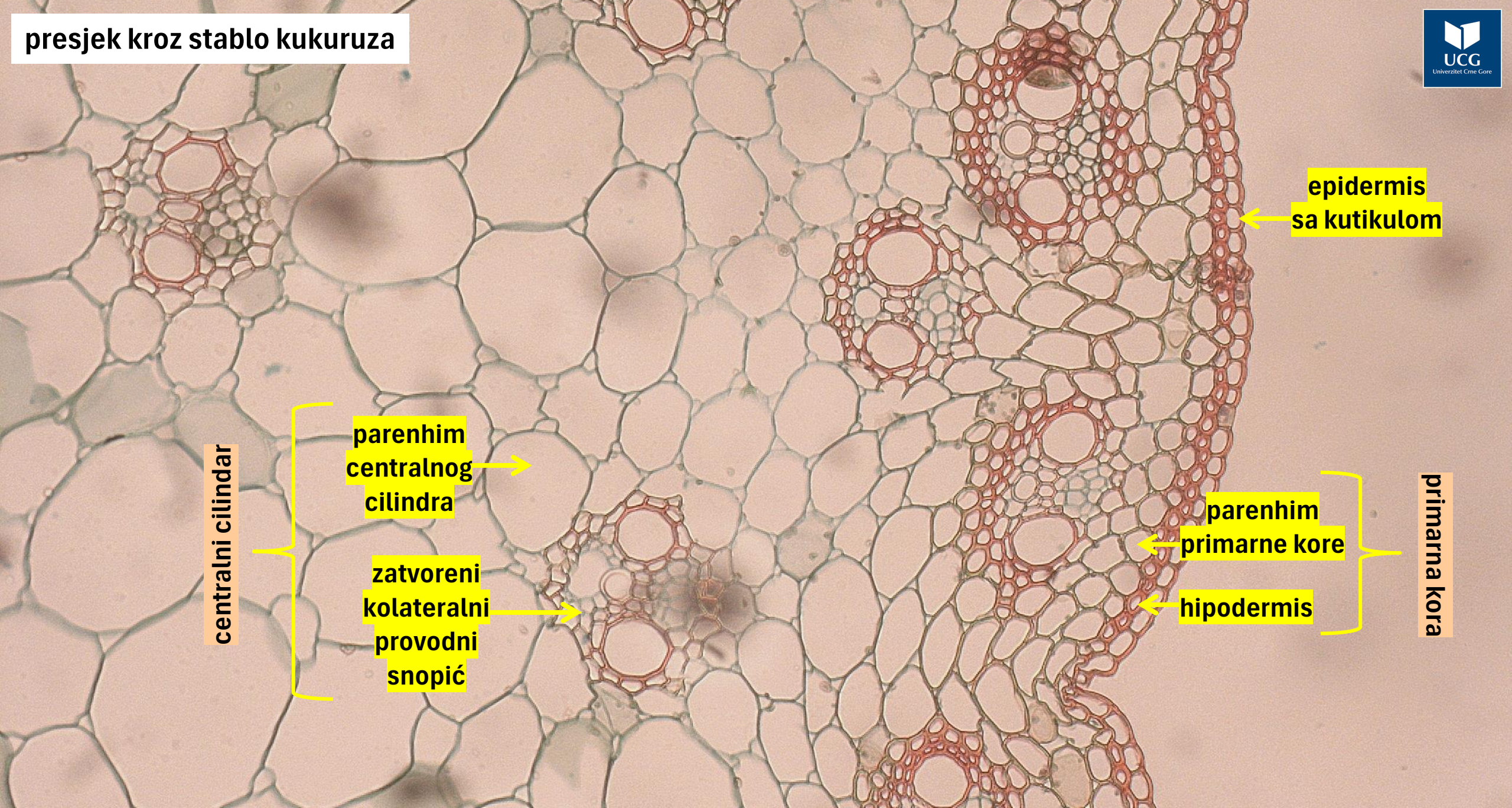


1) Primarna građa stabla monokotila



kukuruz
(*Zea mays*)

presjek kroz stablo kukuruza



epidermis sa kutikulom

centralni cilindar

parenhim centralnog cilindra

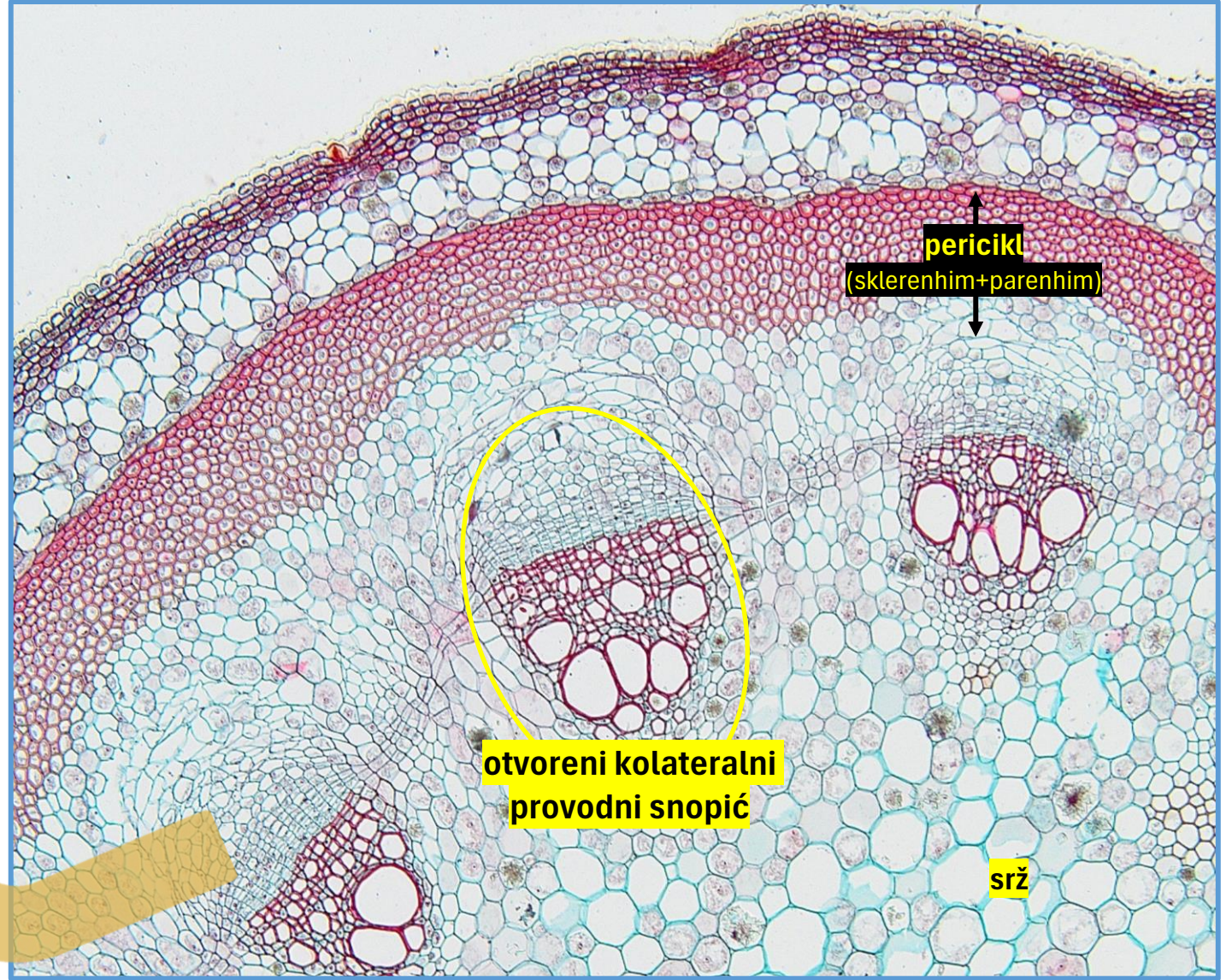
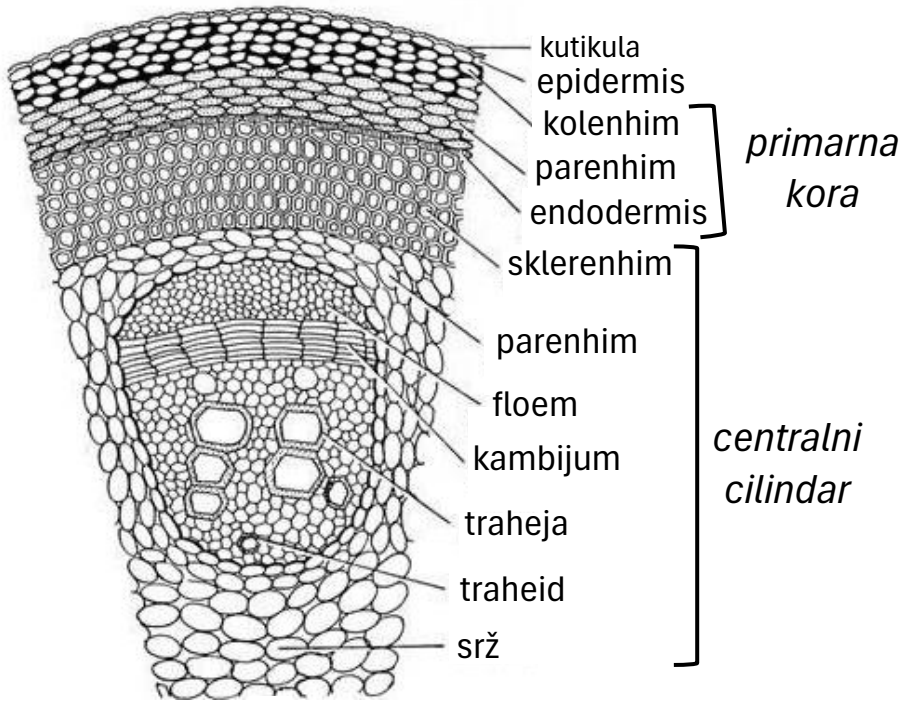
zatvoreni kolateralni provodni snopić

parenhim primarne kore

hipodermis

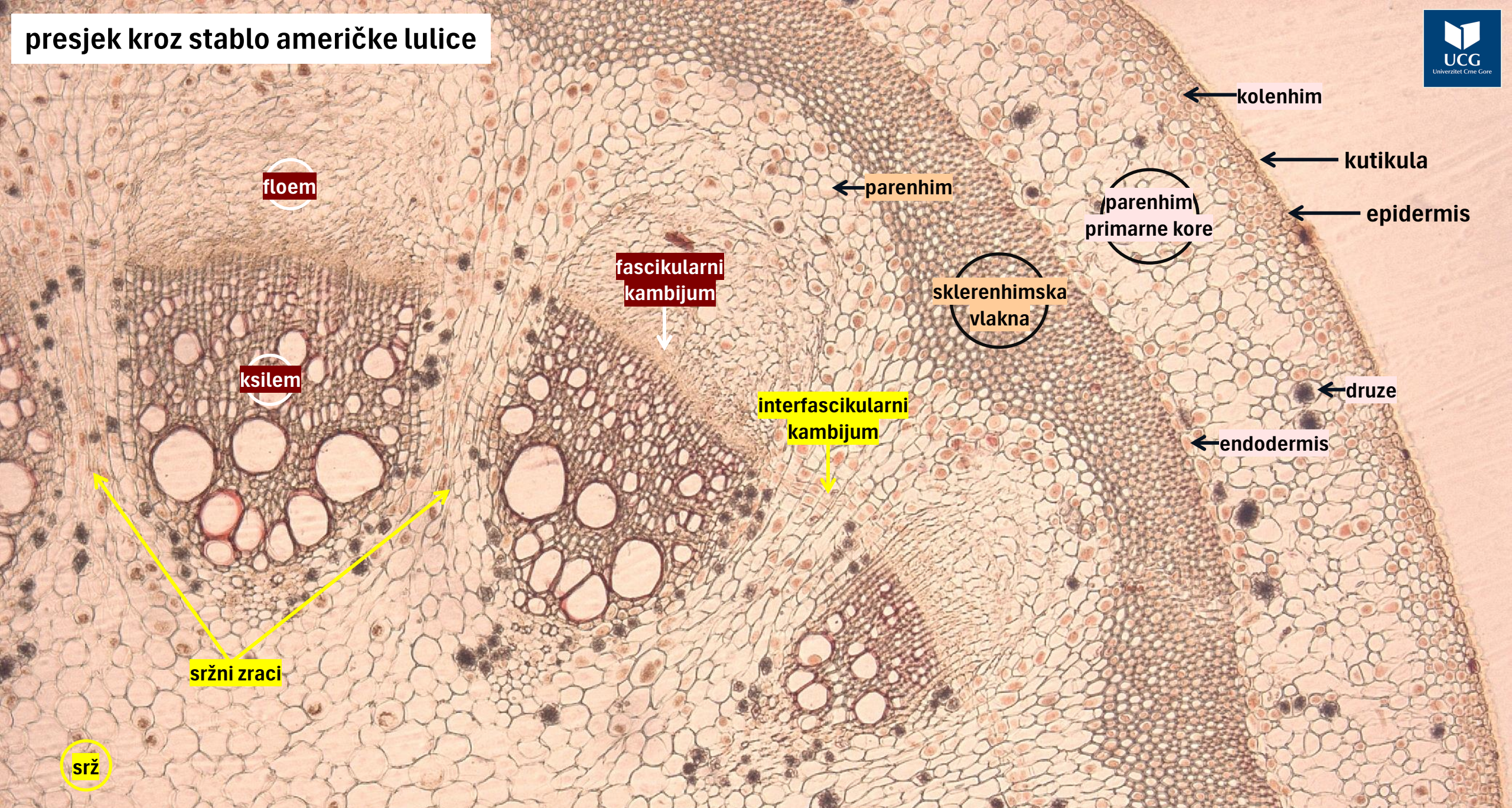
primarna kora

2) Primarna građa stabla dikotila



američka lulica
(*Aristolochia siph*)

presjek kroz stablo američke lulice



← kolenhim

← kutikula

← epidermis

parenhim primarne kore

← druze

← endodermis

floem

← parenhim

fascikularni kambijum

sklerenhimska vlakna

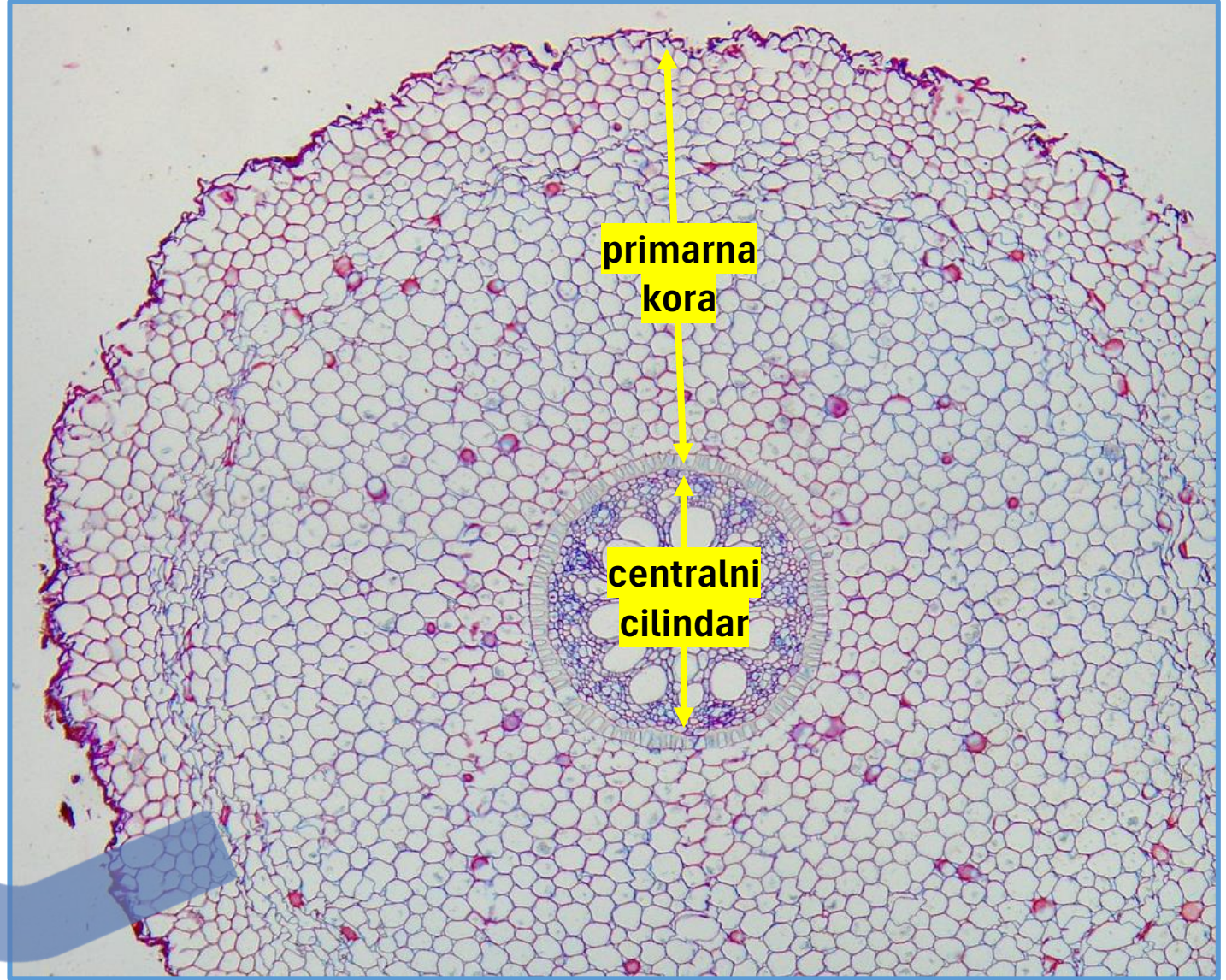
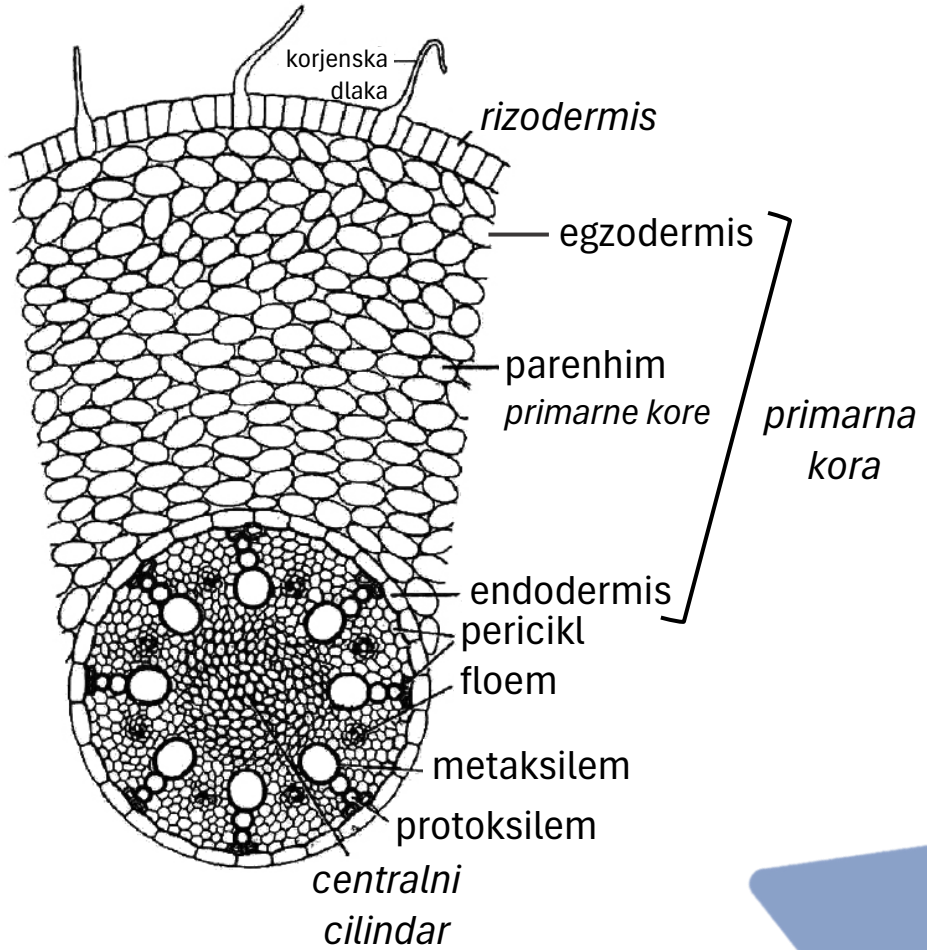
ksilem

interfascikularni kambijum

sržni zruci

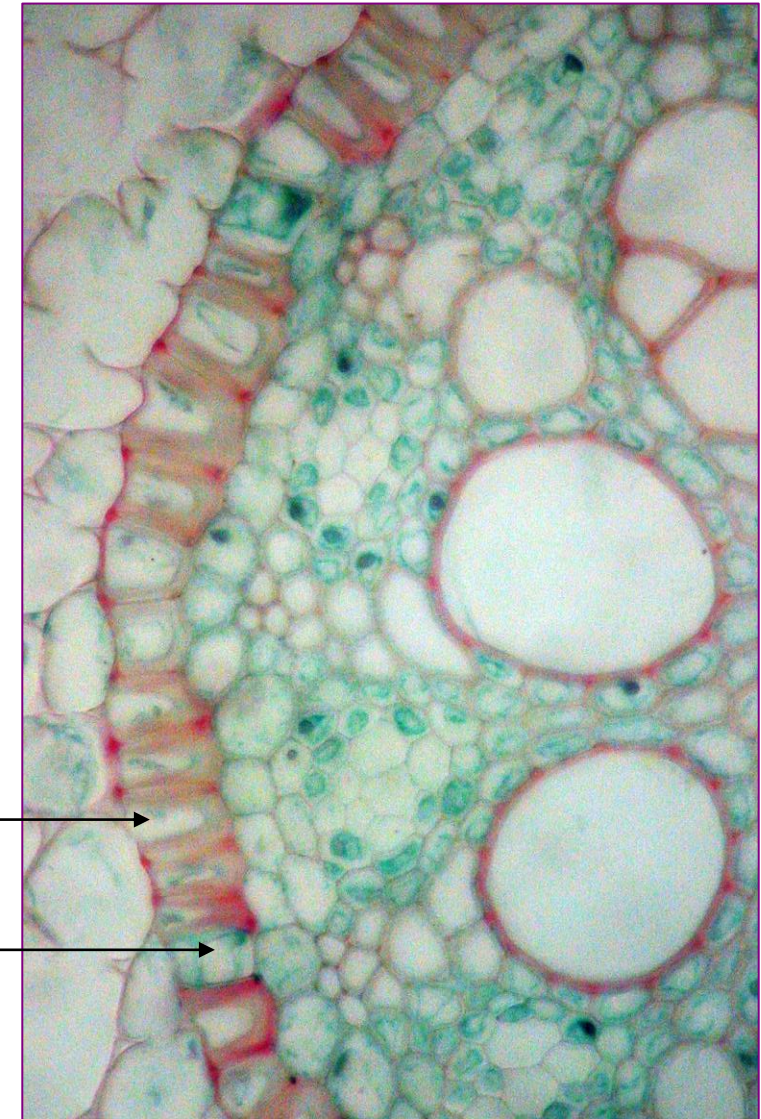
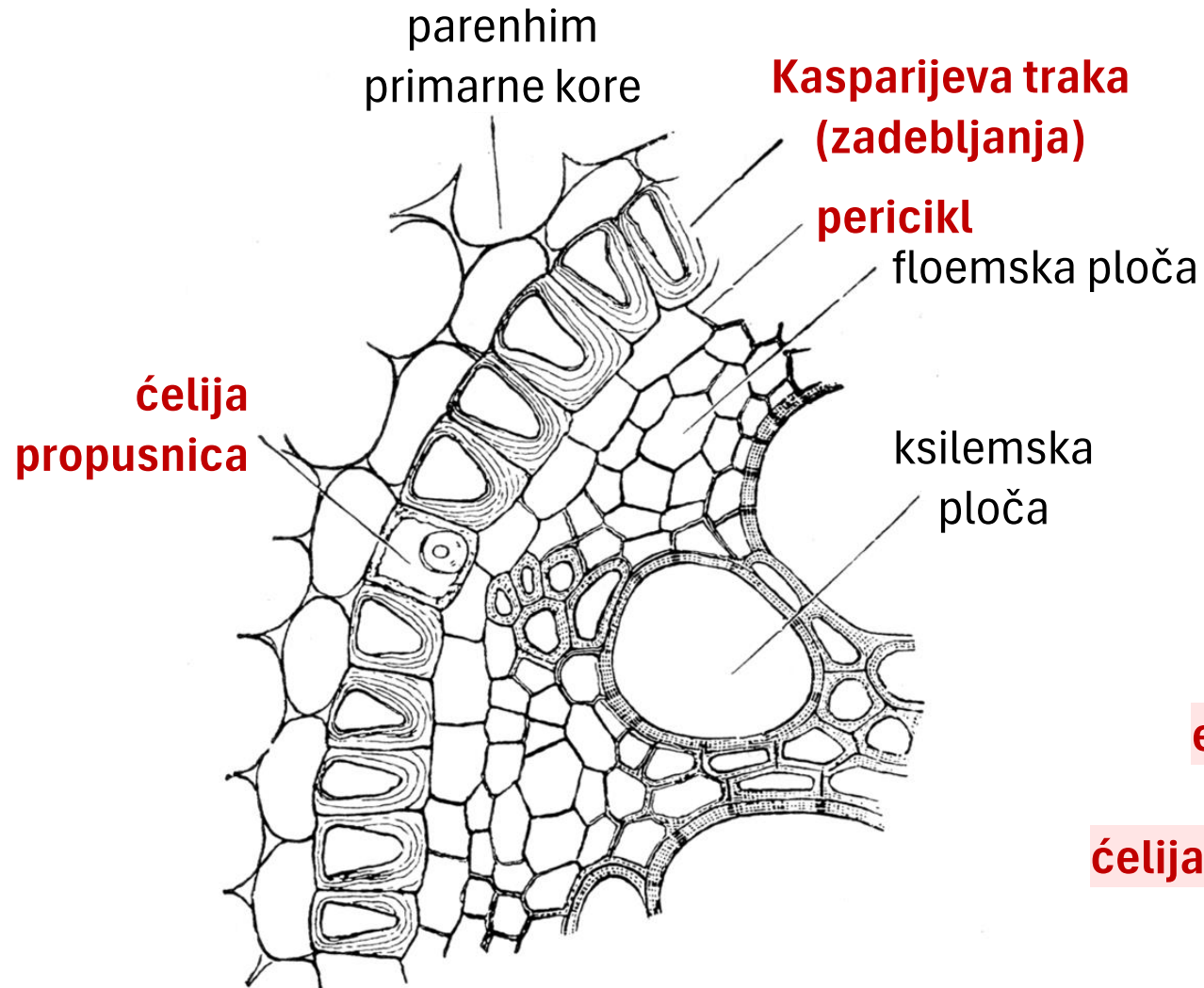
srž

3) Primarna građa korijena monokotila

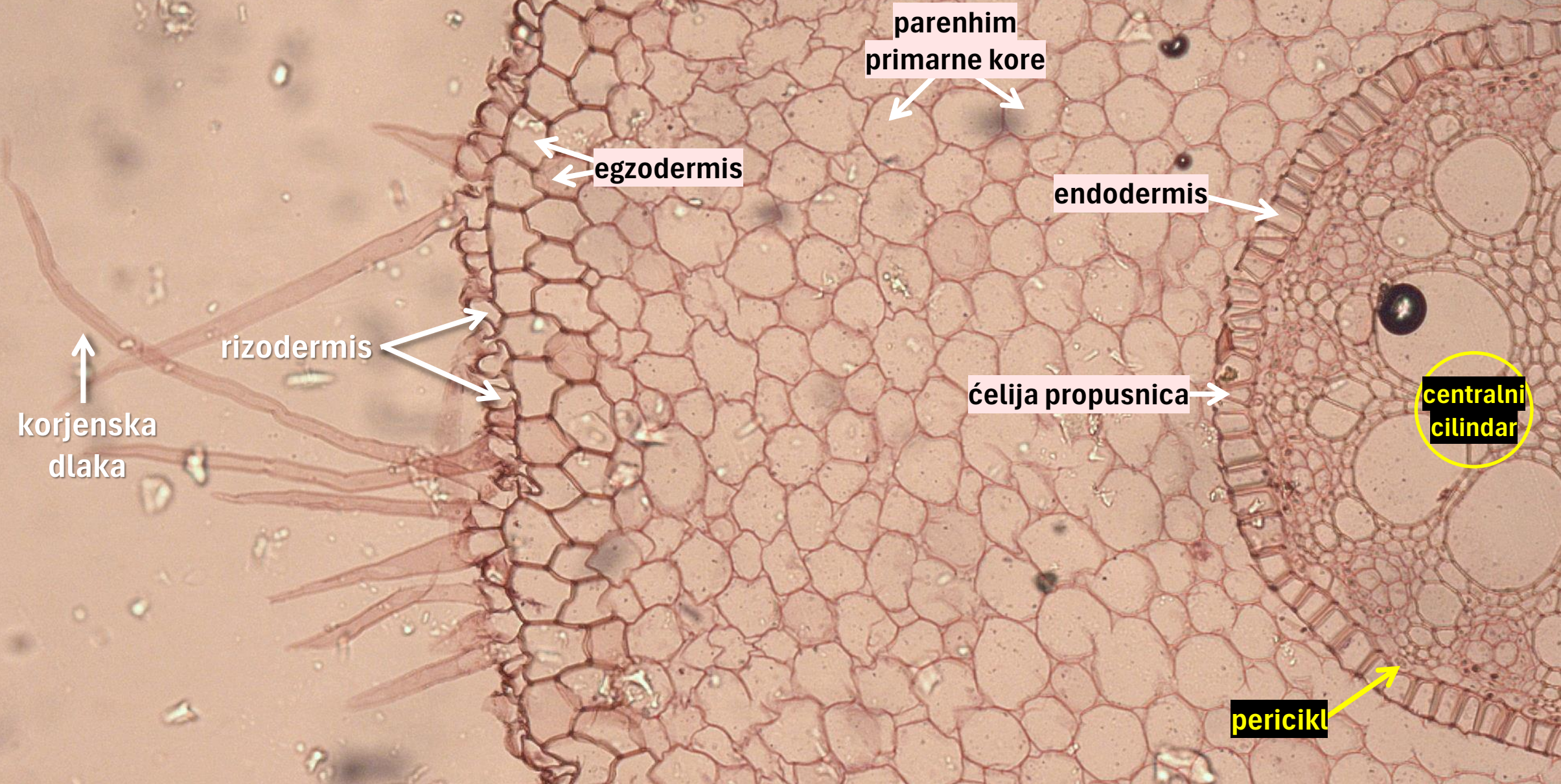


perunika
(*Iris germanica*)

Endodermis, ćelije propusnice i pericikl



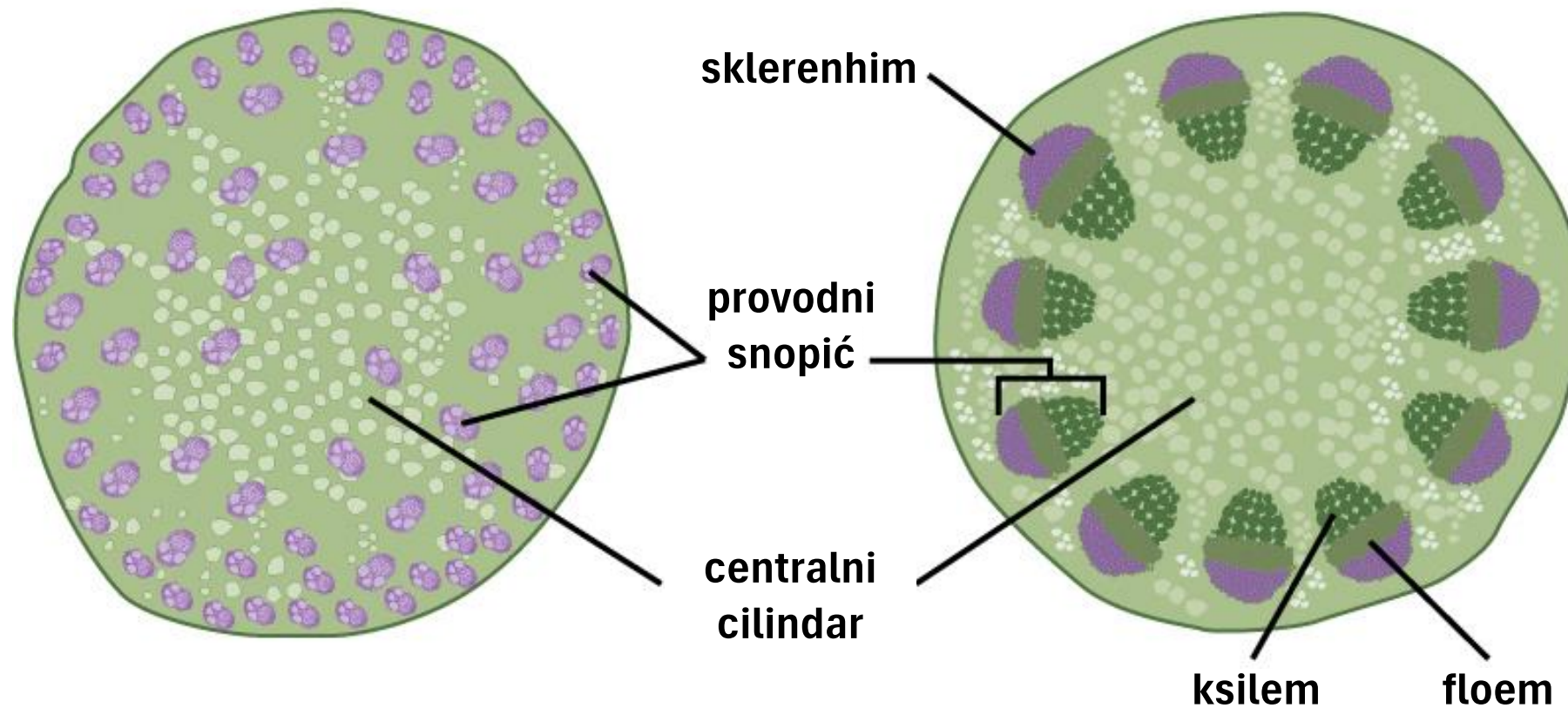
presjek kroz korijen perunike



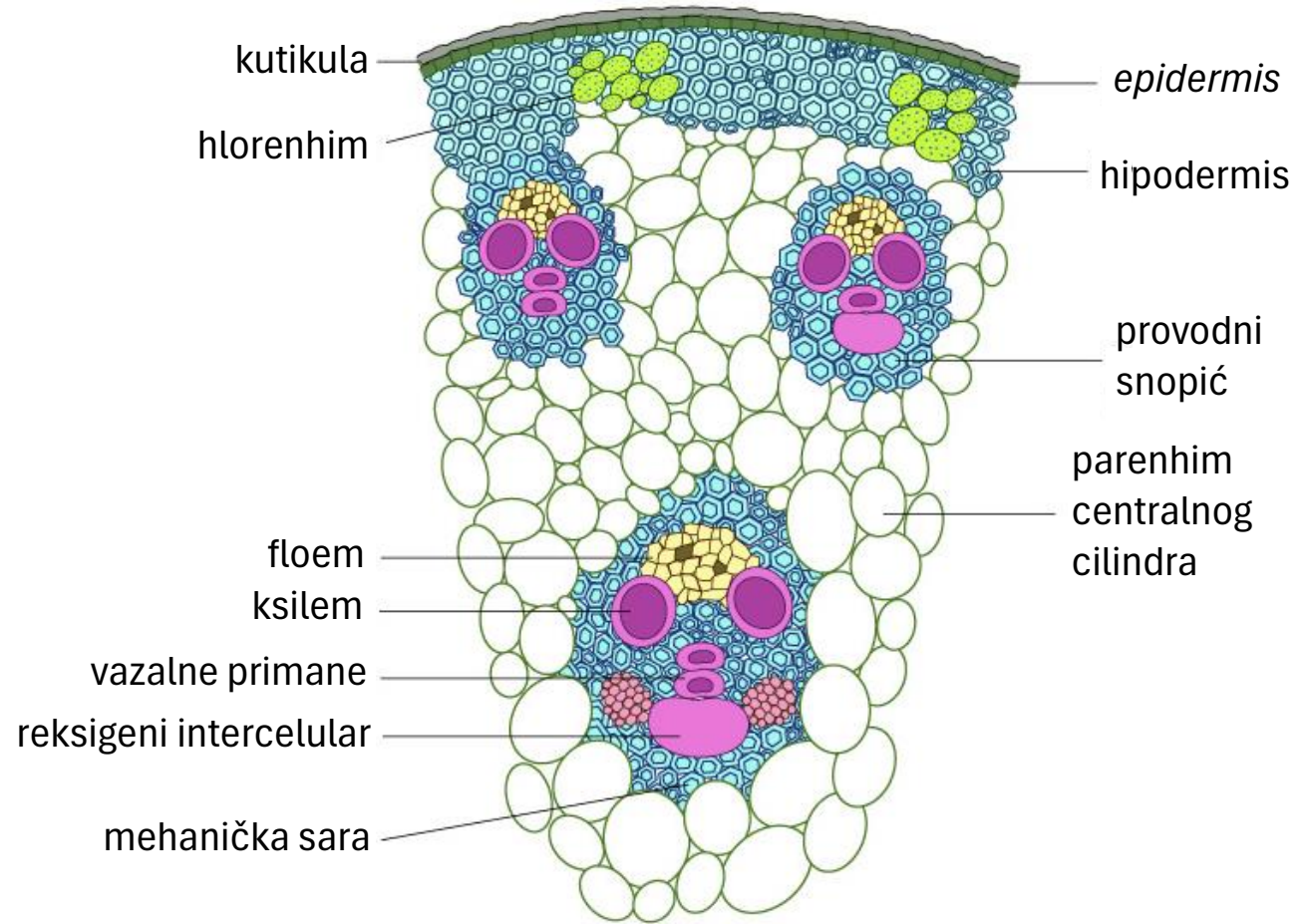
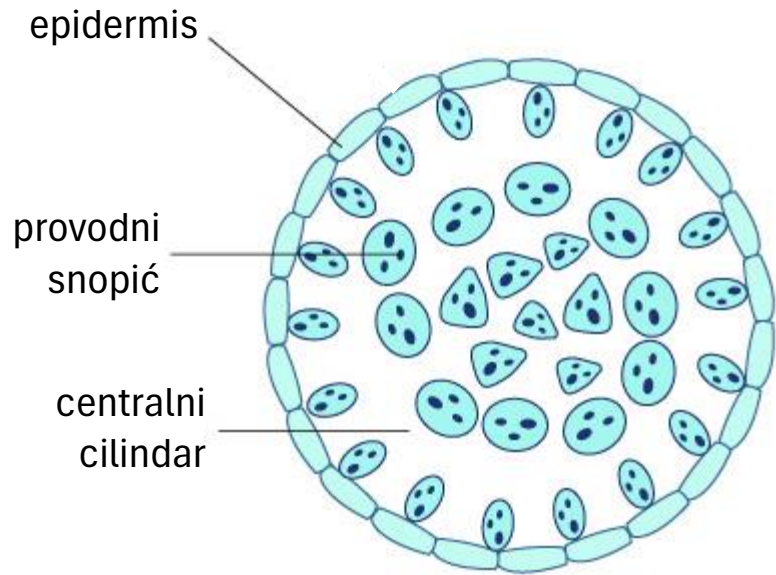
DODATAK:

- 1) Stablo monokotila vs. stablo dikotila**
- 2) Tipična građa stabla monokotila**
- 3) Tipična građa stabla dikotila**
- 4) Model osnovne građe korijena**
- 5) Korijen monokotila vs. korijen dikotila**

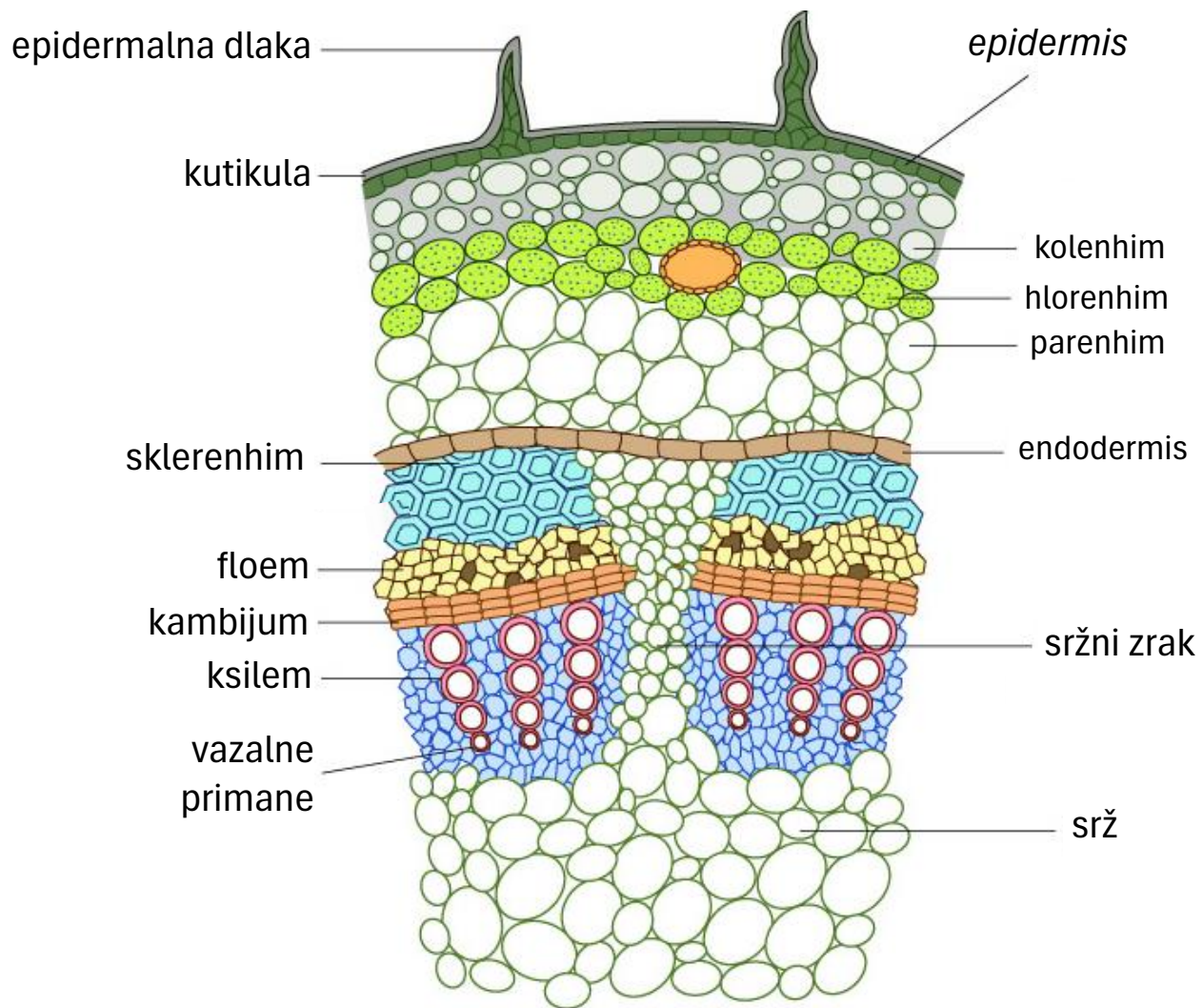
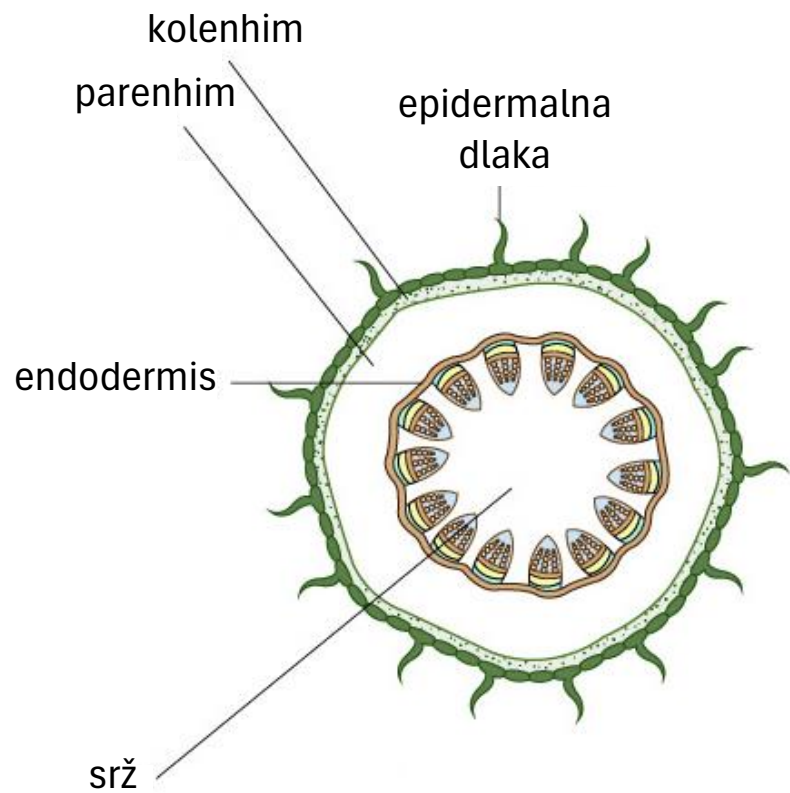
1) Stablo monokotila vs. stablo dikotila



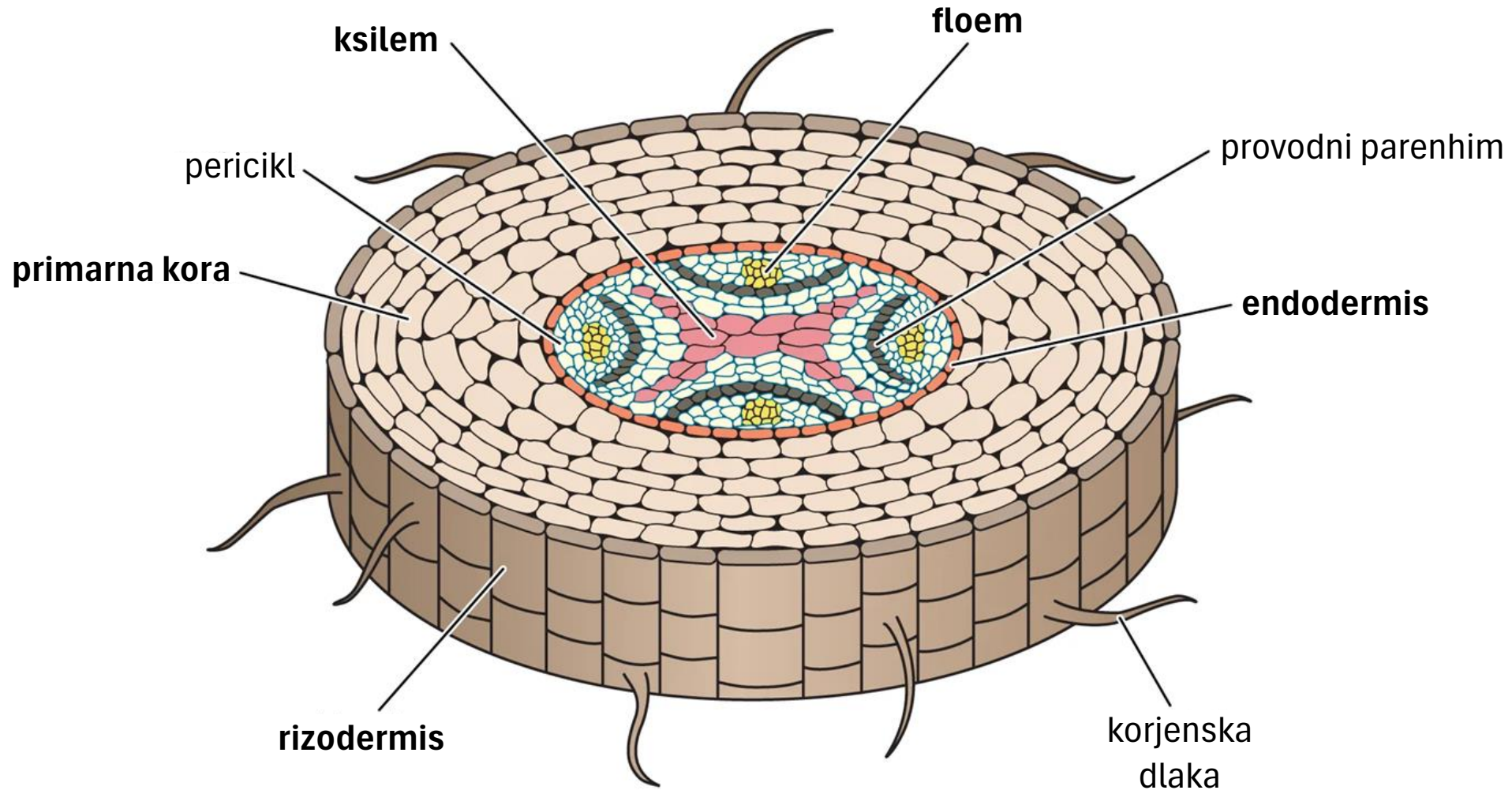
2) Tipična građa stabla monokotila



3) Tipična građa stabla dikotila



4) Model osnovne građe korijena



5) Korijen monokotila vs. korijen dikotila

